

South Pomfret Village Scoping Study



Alternatives Presentation & Public Meeting

November 29th, 2022
7 PM





PROJECT TEAM INTRODUCTIONS


- Jonathan Harrington, Municipal Project Manager
- Jenn Conley, PE, PTOE | VHB Project Manager
- Karen Sentoff | Technical Lead
- Rose O'Brien | Public Outreach




Agenda

 Introductions


 Project Scope & Schedule


 Purpose & Need


 Local Concerns Meeting Takeaways


 Alternative 1

 Alternative 2

 Alternative 3

 Alternative 4

 Public Input

 Next Steps

SCOPE AND SCHEDULE



Project Kickoff Meeting

May 2022

Base Mapping/Existing Conditions

In Progress

Resource Constraints & Permitting Assessment

In Progress



Local Concerns Meeting

September 15th, 2022

Develop Conceptual Alternatives

September- November 2022



Alternatives Presentation Meeting

Today

Draft Scoping Report

December 2022



Final Public Meeting

January 2023

Final Scoping Report

February 2023

PROJECT PURPOSE



The purpose of the South Pomfret Village Scoping Study is to identify opportunities to **improve connectivity** throughout the Village and evaluate design alternatives that will **improve safety and mobility** for all users while **maintaining the livability and historic aesthetic** of the Village.

PROJECT NEEDS



IMPROVE PEDESTRIAN AND BICYCLIST MOBILITY AND SAFETY

The lack of dedicated space for pedestrians and bicyclists, in addition to very few crossing opportunities, greatly limits connectivity throughout the Village. Due to existing conditions, vulnerable road users have limited safe access to local businesses, educational resources, and recreational opportunities and are exposed to potential traffic conflicts.



IMPROVE TRAFFIC CIRCULATION AND SAFETY

Current traffic patterns lack delineated travel ways, parking, turning radii, and access management - all of which enable higher vehicle operating speeds through the Village and limit intuitive access for users.

Study Area

- Intersection of Stage Road, Pomfret Road, and Library Street
- Project Boundaries:
 - Saskadena Six Ski Resort
 - Artistree Arts Community Center
 - 1806 Pomfret Road



Local Concerns Meeting Recap

- Draft Project Purpose
- Existing Conditions
- Public Feedback
 - Property Impact Concerns
 - Speeding Concerns
 - Pedestrian and Bicyclist Safety Concerns
 - Lack of Lighting
 - Intersection Safety Concerns



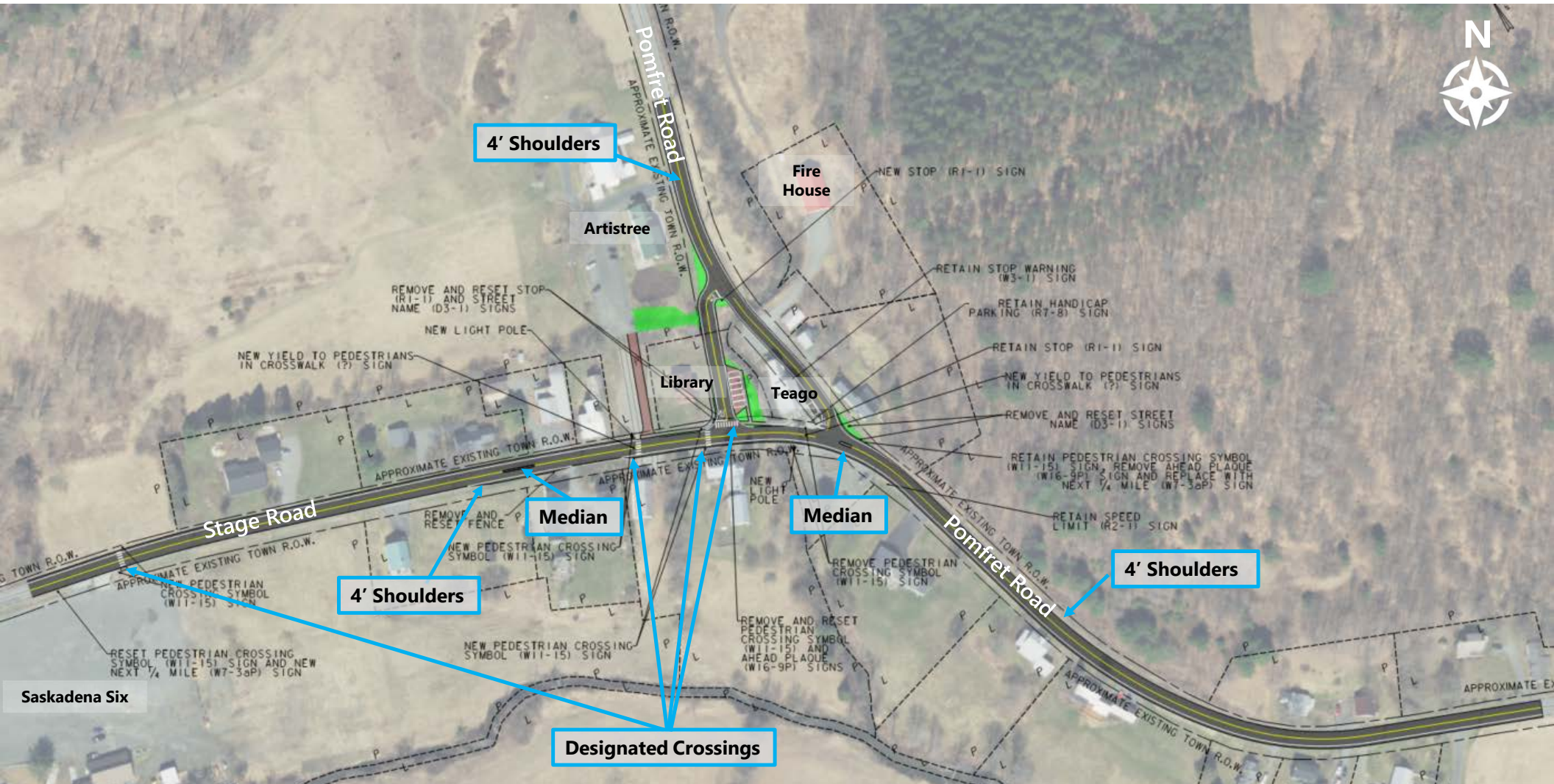
The background is a solid blue color with faint, white, overlapping geometric patterns. These patterns consist of various shapes like rectangles, squares, and curved lines, some of which are interconnected to form a grid-like structure. The patterns are centered and spread across the entire blue area.

Conceptual Alternatives & Evaluation

The background is a solid blue color with faint, white, abstract geometric patterns. These patterns consist of overlapping lines and shapes, including rectangles, squares, and curved lines, creating a complex, layered effect. The patterns are centered and spread across the entire blue area.

Alternative 1

Alternative 1



Alternative 1





BEFORE



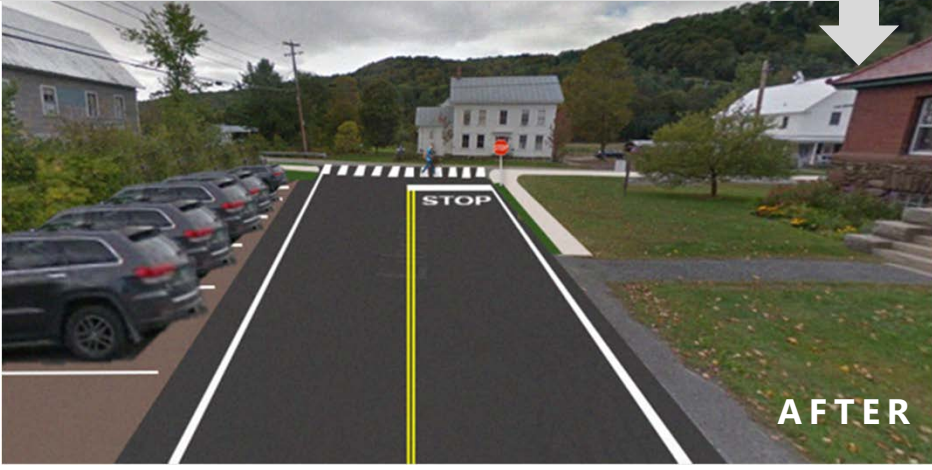
AFTER

LOOKING EAST ON STAGE ROAD

LOOKING SOUTH ON LIBRARY STREET



BEFORE



AFTER

The background is a solid blue color with faint, white, abstract geometric patterns. These patterns consist of overlapping lines and shapes that resemble architectural or structural elements, such as a grid of squares and curved lines, creating a subtle, textured effect.

Alternative 2

Alternative 2

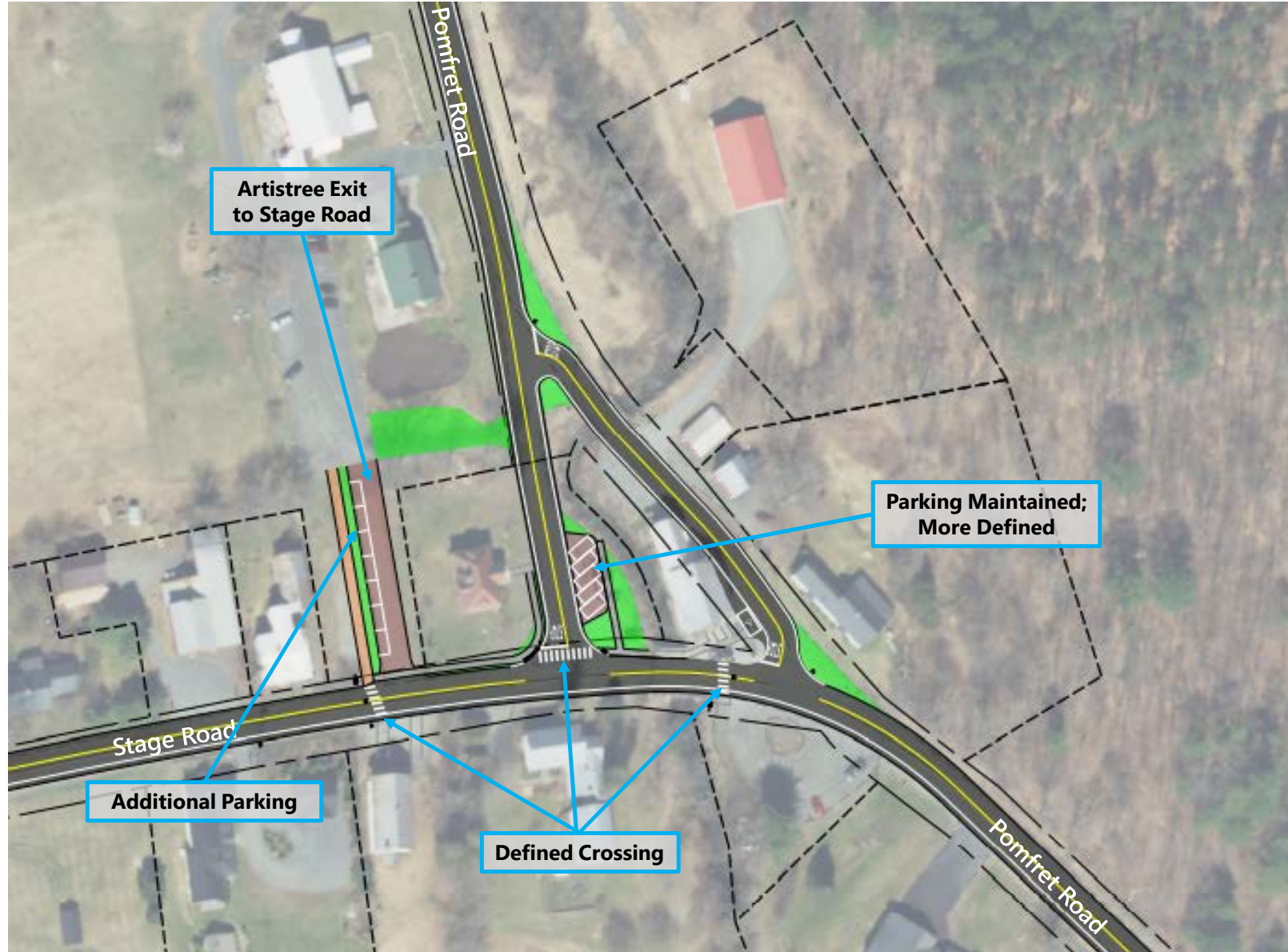


Saskadena Six

Designated Crossings

4' Shoulders

Alternative 2





BEFORE



AFTER

LOOKING EAST ON STAGE ROAD

LOOKING SOUTH ON LIBRARY STREET



BEFORE



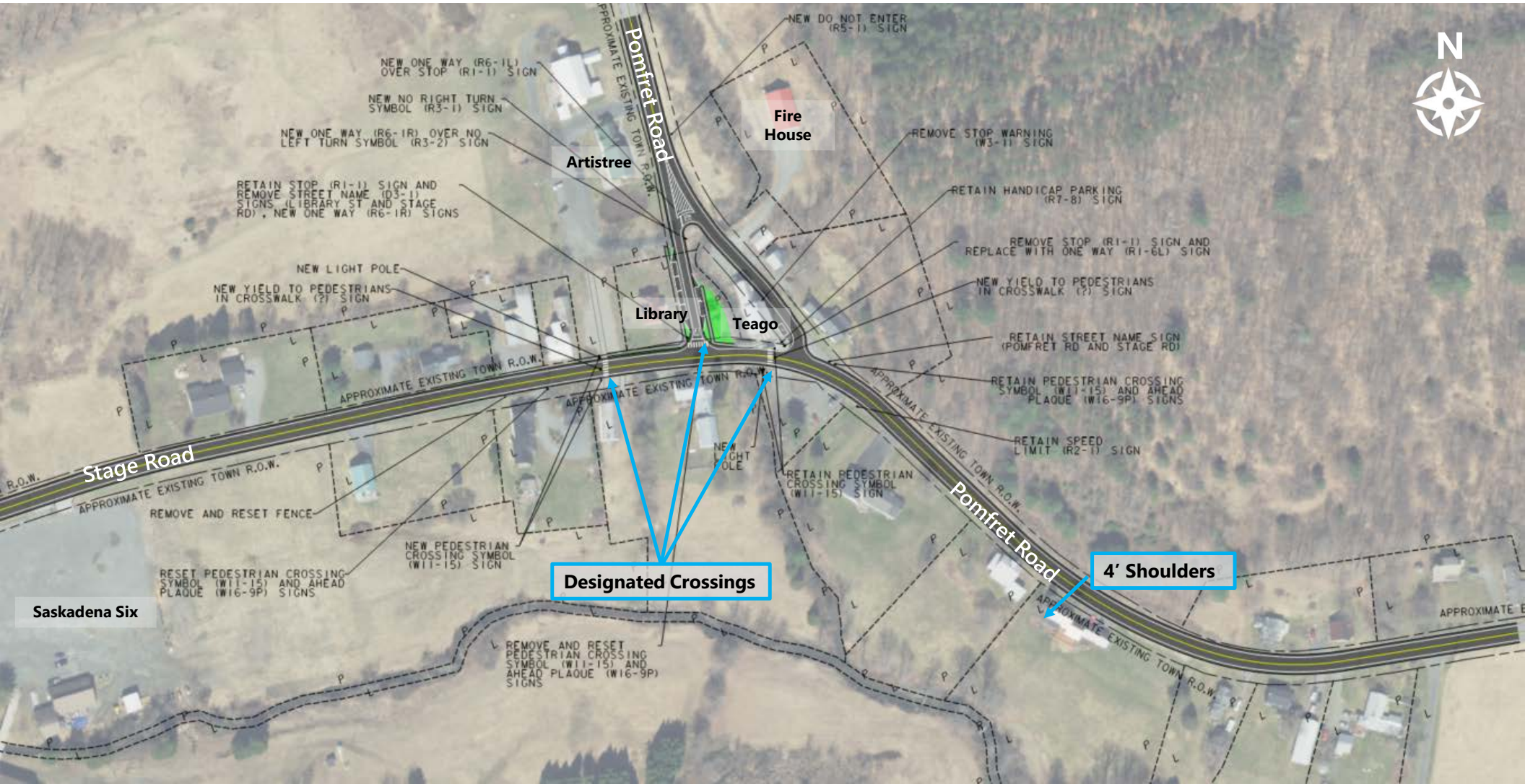
AFTER

Alternative 3

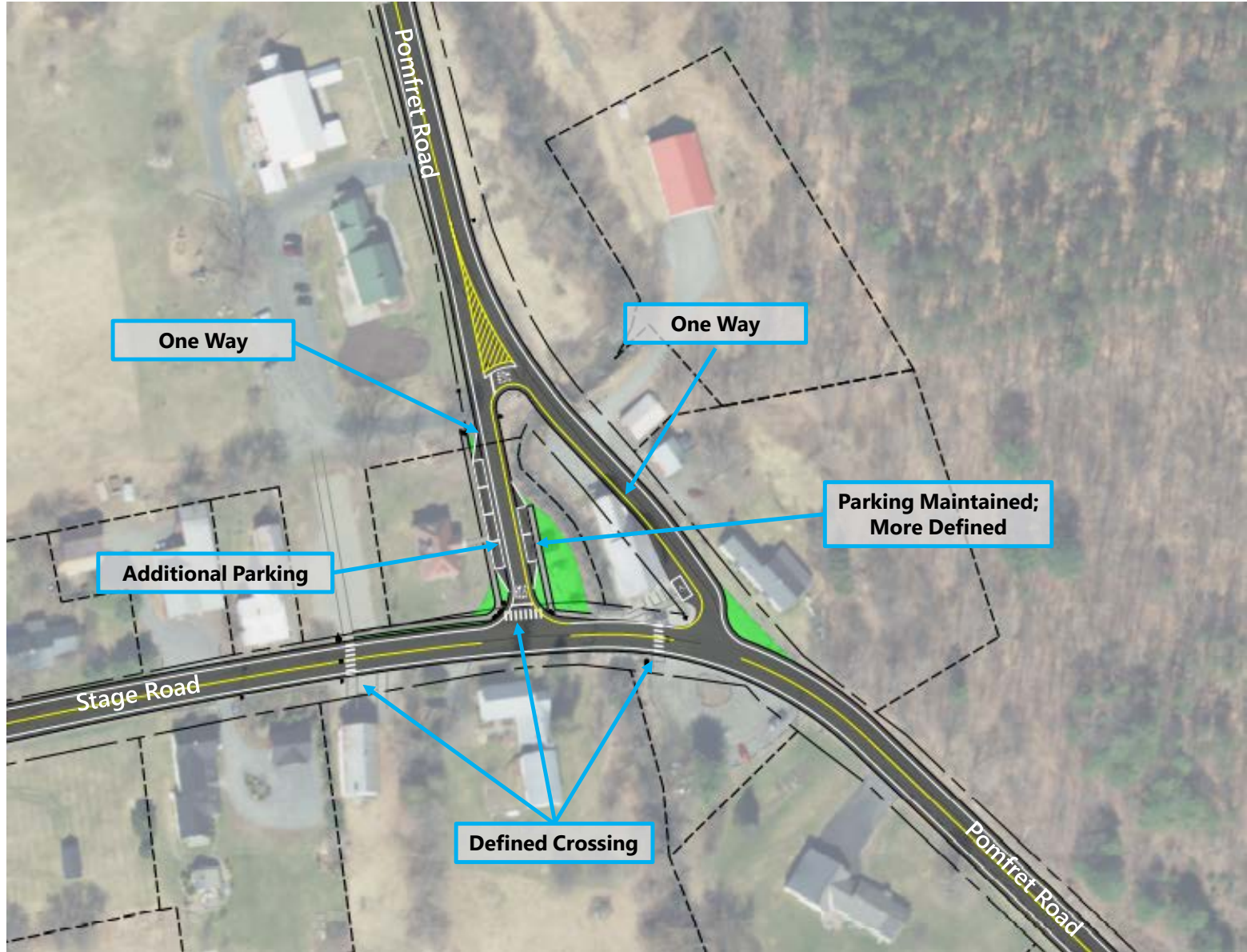
Slide 18

ES21 update with alternatives for pomfret
Elisabeth Sundberg, 11/18/2022

Alternative 3

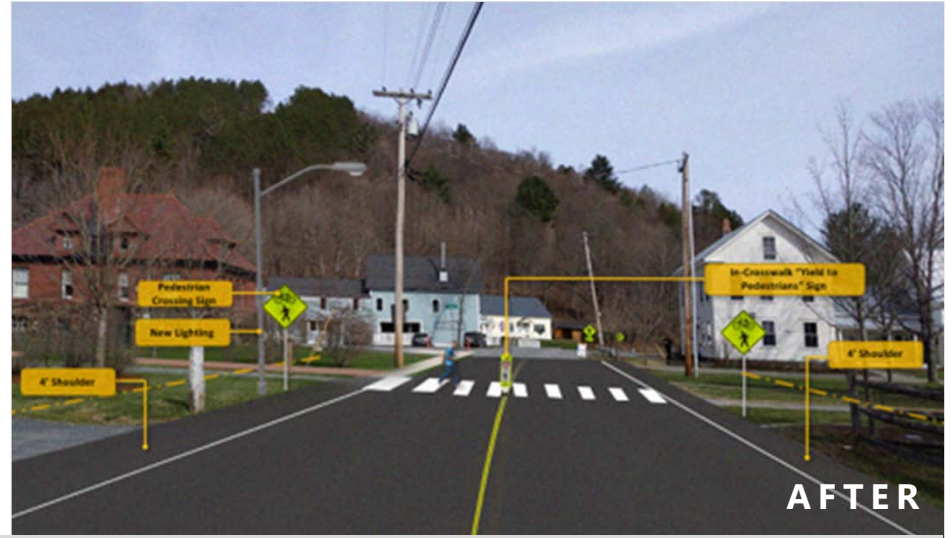


Alternative 3





BEFORE



AFTER

LOOKING EAST ON STAGE ROAD

LOOKING SOUTH ON LIBRARY STREET



BEFORE



AFTER

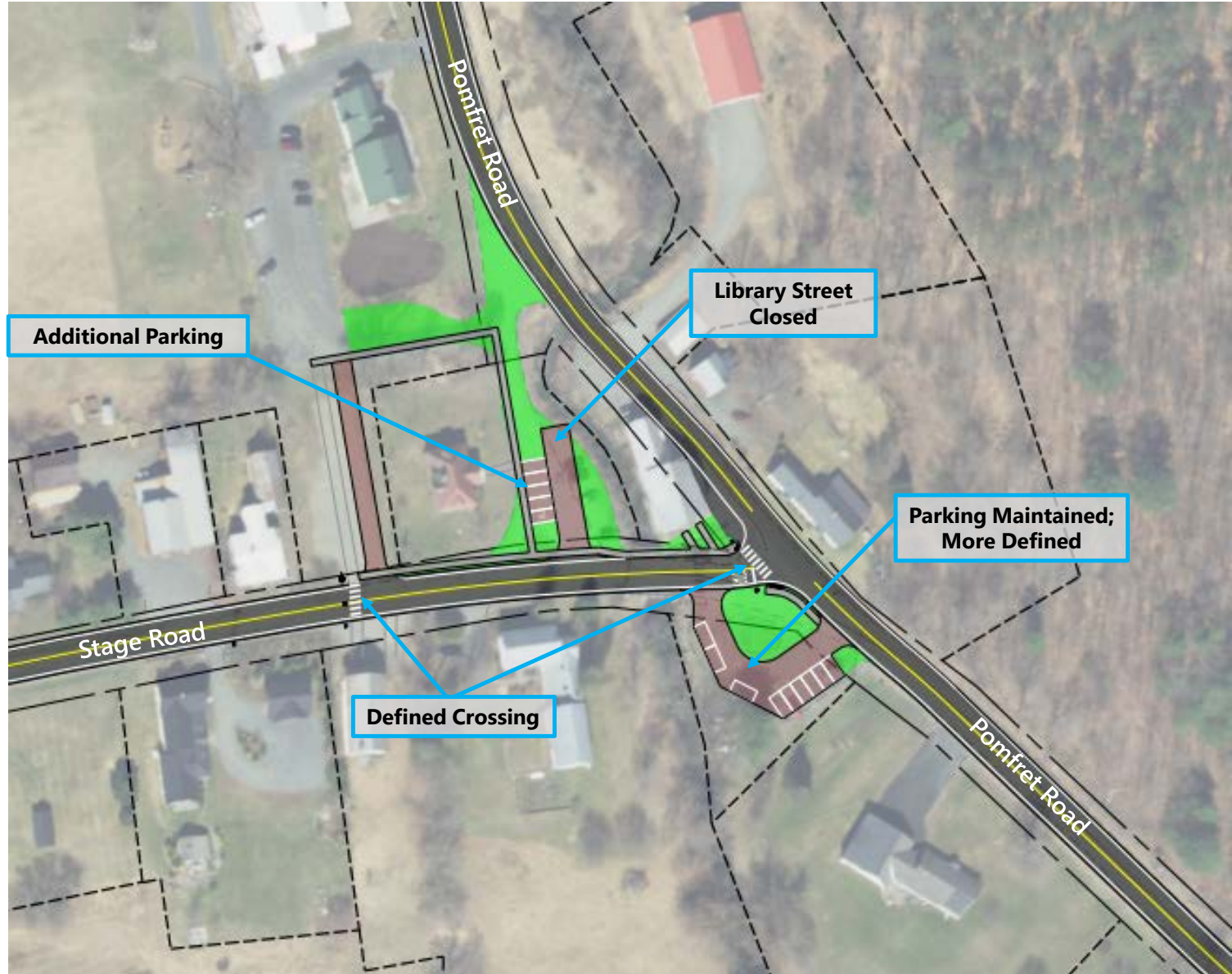
The background is a solid blue color with faint, white, abstract geometric patterns. These patterns consist of overlapping lines and shapes, including squares, rectangles, and curved lines, creating a complex, layered effect. The patterns are centered and spread across the entire blue area.

Alternative 4

Alternative 4



Alternative 4





BEFORE



AFTER

LOOKING EAST ON STAGE ROAD

LOOKING SOUTH ON LIBRARY STREET



BEFORE



AFTER

Evaluation Matrix – Cost, Safety and Community Character

	Alternative 1	Alternative 2	Alternative 3	Alternative 4
Evaluation Matrix	Library Street tees into Pomfret Road and Stage Road, Medians on Stage and Pomfret approaches, Aristree exit to Stage Road, Alternating 4' Shoulders on Stage Road	Pomfret Road tees into Library Street, Artistree exit to Stage Road with Parking, 4' Shoulder Southside on Stage Road	One-way Pair for Pomfret Road and Library Street, Parallel Parking both sides Library Street, 4' Shoulders on Stage Road	Library Street closed to traffic, Stage Roads tee into Pomfret Road, 2' Shoulders on Stage Road
Cost				
Relative Cost Scale	\$484,043	\$476,422	\$509,466	\$516,640
Safety & Mobility				
Pedestrian Access & Safety	Improved	Improved	Improved	Improved
Bicyclist Access & Safety	Slightly Improved	Slightly Improved	Improved	Slightly Improved
Vehicle Safety	Improved	Improved	Improved	Improved
Community Character				
Aesthetics	Improved	Improved	Improved	Improved
Satisfies Purpose & Need	Yes	Yes	Yes	Yes

Evaluation Matrix – Anticipated Impacts

Evaluation Matrix	Alternative 1	Alternative 2	Alternative 3	Alternative 4
	Library Street tees into Pomfret Road and Stage Road, Medians on Stage and Pomfret approaches, Aristree exit to Stage Road, Alternating 4' Shoulders on Stage Road	Pomfret Road tees into Library Street, Artistree exit to Stage Road with Parking, 4' Shoulder Southside on Stage Road	One-way Pair for Pomfret Road and Library Street, Parallel Parking both sides Library Street, 4' Shoulders on Stage Road	Library Street closed to traffic, Stage Roads tee into Pomfret Road, 2' Shoulders on Stage Road
Impacts				
ROW Impacts	Moderate - Library Street and Aristree Driveway reconfiguration	Moderate - Library Street and Aristree Driveway reconfiguration	Minor - Library Street	Moderate - Library Street and Aristree Driveway Reconfiguration
Utility Impacts	Moderate	Moderate	High	Moderate
Agricultural Lands	None	None	None	None
Archaeological	Minor	Minor	Minor	Minor
Historic	Required	Required	Required	Required
Fish & Wildlife	None	None	None	None
Rare Threatened & Endangered Species	None	None	None	None
Public Lands - Sect. 4(f)	Required - Library	Required - Library	Required - Library	Required - Library
Wetlands	None	None	None	None
New Impervious Surfaces	Minor	Minor	Moderate	Minor

Evaluation Matrix – Anticipated Permitting

Evaluation Matrix	Alternative 1	Alternative 2	Alternative 3	Alternative 4
	Library Street tees into Pomfret Road and Stage Road, Medians on Stage and Pomfret approaches, Aristree exit to Stage Road, Alternating 4' Shoulders on Stage Road	Pomfret Road tees into Library Street, Artistree exit to Stage Road with Parking, 4' Shoulder Southside on Stage Road	One-way Pair for Pomfret Road and Library Street, Parallel Parking both sides on Stage Road	Library Street closed to traffic, Stage Roads tee into Pomfret Road, 2' Shoulders on Stage Road
Permitting				
Act 250	Not Applicable	Not Applicable	Not Applicable	Not Applicable
Section 404 - Wetlands (USACOE)	Not Applicable	Not Applicable	Not Applicable	Not Applicable
Section 401 Water Quality Certification	Not Applicable	Not Applicable	Not Applicable	Not Applicable
State Wetlands Permit	Not Applicable	Not Applicable	Not Applicable	Not Applicable
Stream Alteration Permit	Potential	Potential	Potential	Potential
Construction Phase Storm Water Discharge Permit (General Permit 3-9020)	Not Anticipated	Not Anticipated	Not Anticipated	Not Anticipated
Operational Phase Storm Water Discharge Permit (General Permit 3-9015)	Not Anticipated	Not Anticipated	Not Anticipated	Not Anticipated
Lakes & Ponds	Not Applicable	Not Applicable	Not Applicable	Not Applicable
Rare, Threatened, and Endangered Species	Not Anticipated	Not Anticipated	Not Anticipated	Not Anticipated
Section 1111 Permit	Not Applicable	Not Applicable	Not Applicable	Not Applicable

Public Input



Questions?
Comments?





Stay Connected!

Jenn Conley, Project Manager

jconley@vhb.com

802.497.6191