

South Pomfret Village Scoping Study



Local Concerns Meeting

September 15th, 2022
7 PM



Project Team Introductions

- Jonathan Harrington, Municipal Project Manager
- Jenn Conley, PE, PTOE | VHB Project Manager
- Karen Sentoff | Technical Lead
- **Rose O'Brien | Public Outreach**

Agenda



Introductions



Project Purpose



Review of Scope & Schedule



Past Projects



Existing Conditions Overview



Discussion of Opportunities & Constraints



General Questions and/or Comments



Next Steps

Draft Project Purpose

The purpose of the South Pomfret Village Scoping Study is to identify opportunities to improve connectivity throughout the Village center and evaluate design alternatives that will improve safety and mobility for non-motorized users while maintaining the Village aesthetic.

Scope and Schedule

- Project Kickoff Meeting May 2022
- Base Mapping/Existing Conditions In Progress
- Resource Constraints & Permitting Assessment In Progress
- Local Concerns Meeting *Today*
- Develop Conceptual Alternatives September- November 2022
- Alternatives Presentation Meeting November 2022
- Draft Scoping Report December 2022
- Final Public Meeting January 2023
- Final Scoping Report February 2023

Study Area

- Intersection of Stage Road, Pomfret Road, and Library Street
- Project Boundaries:
 - Saskadena Six Ski Resort
 - Artistree Arts Community Center
 - 1806 Pomfret Road



Past Planning Studies and Projects



Pomfret Town Plan

**Adopted August 17,
2016**

The Pomfret Town Plan was prepared by the Pomfret Planning Commission with assistance from the Two Rivers-Ottawaquechee Regional Commission; funded, in part, by a Municipal Planning Grant from the Vermont Agency of Commerce and Community Development.

**Pomfret
Planning
Commission**

- Transportation Goals:
 - Promote and maintain a transportation system that is safe, efficient and complements the other goals and planning principles of this Plan.
 - Minimize transportation energy consumption.
 - Maintain the historic, scenic, and rural quality of roads and trails.
- Some Transportation Objectives
 - Ensure that future development does not endanger, and enhances, when possible, the public investment in the Town and regional transportation systems, including highway, bridges, public transit and trails.
 - Promote modes of transportation other than simply single-occupancy vehicles.

Local Projects

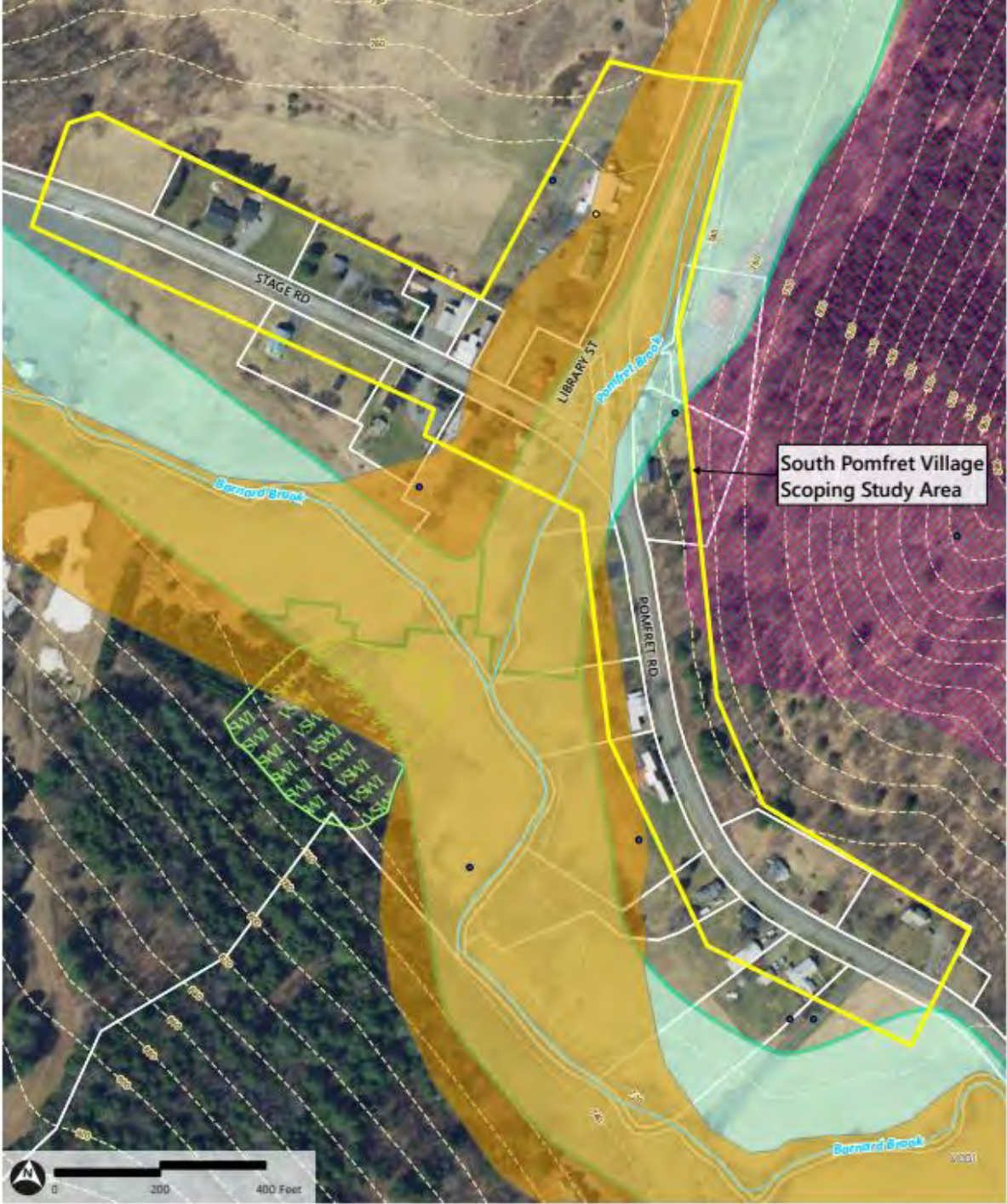
Teago General Store

Artistree

Library Street at the intersection
with Stage Road Improvements



Existing Conditions: Environmental



South Pomfret Village
Scoping Study Area

- | | | |
|---|---------------------------|------------------------|
| Scoping Study Area (VHB) | VSWI Wetland (ANR) | Town Boundary (VCGI) |
| Public Well (ANR) | River Corridor (ANR) | 20 ft. Contours (VCGI) |
| Private Well (ANR) | Deer Wintering Area (ANR) | Parcel Boundary (VCGI) |
| VHD Stream (VCGI) | County Boundary (VCGI) | |
| Flood Hazard Areas (FEMA) | | |
| Zone A (1-percent annual chance floodplains without elevations) | | |

Existing Conditions – Historical Resources

- Potential Historic Resources
 - There were 24 properties and two bridges surveyed throughout the study area to identify those eligible for listing in the National Register
 - There are 13 properties including bridge 9 recommended eligible for listing in the National Register
- Section 4(f) Resources
 - Abbott Memorial Library
- What to expect:
 - Review under Section 106 of the National Historic Preservation Act
 - Potential evaluation/determination under Section 4(f) of the Department of Transportation Act



Existing Conditions – Historical Resources



Area of Potential Effect (VHB) VHD Stream (ANR) Parcel Boundary (VCGI)



Existing Conditions – Archeological Resources

- Potential Archeological Resources
 - Three Areas of Potential Archeological Sensitivity



Existing Conditions: Crash Data

- Study Area Crash Data (2016-2021)
 - 3 Total Crashes in Study Area
 - 2 single vehicle crashes
 - 1 head on collision
 - 0 Injuries or Fatalities



Existing Conditions – Traffic Volumes

- Stage Road between Library/ Pomfret Road
 - AADT: 715 vehicles (2015)
- Library Road just North of Stage Road
 - AADT: 239 vehicles (2015)
- Significant increases since that time associated with Artistree and Teago, but still low volume



Bridge Condition

- In a study by DuBois & King it was determined that both bridges are hydraulically unsound.
 - Pomfret Road Bridge (Bridge 9)
 - Eligible for historic recognition
 - Constructed in 1926
 - Stage Road Bridge (Bridge 5)
 - Constructed in 1939
- Current scoping is reviewing and re-evaluating the implications



Existing Conditions – Bicycle & Pedestrian Infrastructure



Only marked pedestrian crossing in South Pomfret

Study Area

- 1 Abbott Memorial Library
- 2 Teago General Store
- 3 Artistree Community Center
- 4 Fire Station
- 5 Saskadena Six Ski Resort



Public Input

Intersection of Pomfret Road, Stage Road and Library Street



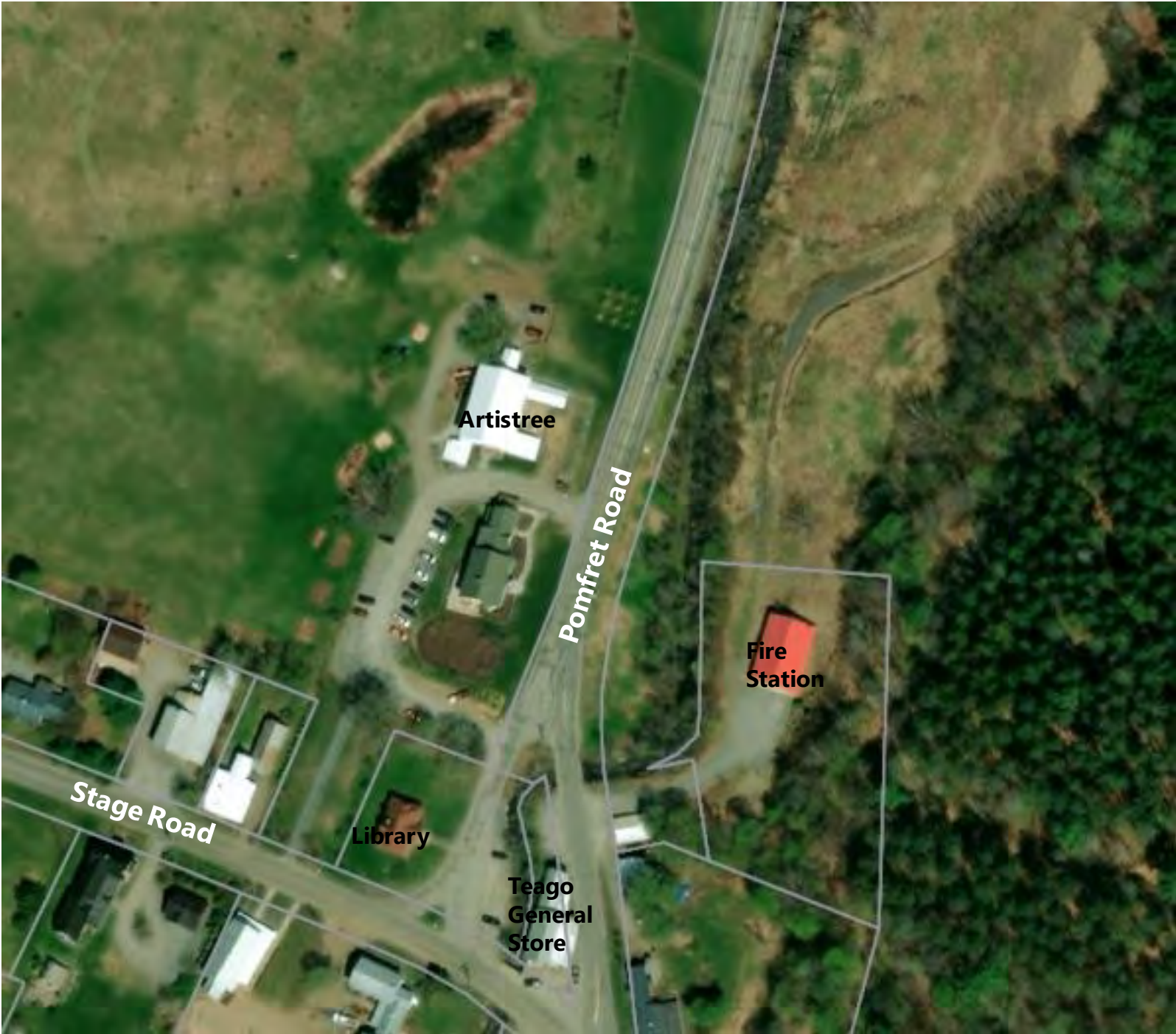
Pomfret Road (South)



Stage Road



Pomfret Road (North)





Questions?
Comments?





Stay Connected!

Jenn Conley, Project Manager

jconley@vhb.com

802.497.6191